

2020 AMI/USA Administrators Retreat



We are thrilled to be offering the 2020 Administrators Retreat in beautiful Traverse City, Michigan!

Location:

Park Place Hotel & Conference Center

Dates:

July 12-14, 2020

Online registration:

<http://bit.ly/AMIUSAADMINRETREAT20>

To reserve a room, call 231-946-5000 and ask for the Association Montessori International Group Block.

The cut-off date will be 6/19/2020.

<https://www.park-place-hotel.com/>

Schedule

SUNDAY (7/12)

5:00 p.m. Participant Check-In

6:00 p.m. Wine & Cheese Reception

MONDAY (7/13)

9:00–12:00 p.m. • Working with Students with Learning Differences in Montessori Schools • Scott A. Schuh, Jen Berner

A student in your school is struggling with academic, communication, social or behavioral needs. What do you do? This presentation will center on the identification of challenges students experience, how to support them, and help them move forward. Today's workshop includes an introduction to the processes and tools used by this team to help students be more successful. As participants, you will have the opportunity to become familiar with special education eligibility, with a collaborative problem-solving model, assessment tools used to help identify students with special needs, and strategies to support their access to the curriculum.

12:00–1:15 p.m. • Lunch

1:15–4:15 p.m. • Engaging Effective Conversations on Equity • Lillie Wolff

During this workshop we will explore the components of creating generative conversations for dialogue about topics of race and racism, and how participants can catalyze action within their school community and greater communities. We will explore things like how to get this conversation started or continue it with staff members; what resources exist to support this work with staff, parents, and children; and how to build momentum as an organization around the subject of antiracist and anti-bias education.

TUESDAY (7/14)

9:00–10:15 a.m. • Be Our Guest; Disney's Philosophy of Customer Service • Gigi Chinisci

10:30 a.m.–12:00 p.m. • Disney's Leadership Techniques Can Work For You • Gigi Chinisci

12:00–1:00 p.m. • Lunch

1:30 p.m.–2:30 p.m. • Attitudes have Outcomes • Gigi Chinisci

Independent schools are facing more competition than ever before. Our energies are divided between not only our current families, but also with our co-workers, alumni and even our potential families. By looking at Walt Disney's business philosophy and exploring the science of positive psychology, this workshop will show simple practices that will help set your school apart from the crowded field. How can your school deliver exceptional service to its families? When does your disposition maximize your potential? What are the proven strategies in handling negative people? This interactive workshop will answer these questions and many more. Walt Disney developed a basic business credo that has carried the Disney Corporation to the top of the Forbes 500 list consistently year after year. This four-hour workshop will be divided into three sections; "Be Our Guest; Disney's Philosophy of Customer Service", "Disney's Leadership Techniques Can Work for You" and "Attitudes have Outcomes". These techniques and principles can easily be incorporated at your school, in your career and in other aspects of your life.

3:00 p.m. Depart for activities! Options include a wine tour on Old Mission Peninsula or a chartered sail on West Traverse Bay!

6:00 p.m. Reception at Bonobo Winery

Speakers



Scott A. Schuh, School Psychologist

Northern Kentucky University, Bachelor of Science (1990).

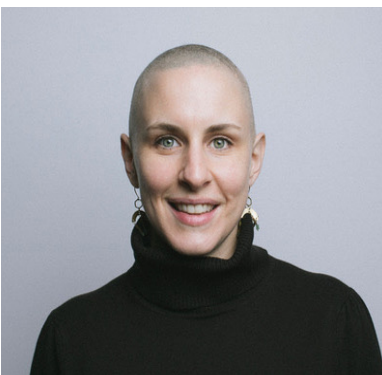
Masters of Education, University of Cincinnati, specializing in School Psychology (1993).

Grand Valley State University: K-12 Administration degree (2004).

I have worked as a School Psychologist for 25 years (1 year in Jacksonville, Florida; 5.5 years in Marshall, Michigan; and the last 20 in my current position). My background includes work with a variety of learners, both general education students and students with special needs, ranging in ages from 2 to 26 years. I have supported students in a variety of settings including public schools, pre-schools, private and parochial schools, charter schools and post high school education. I have been a part of the team at The Children's House Montessori for 16 of the last 18 years. My current area of focus is supporting students on the autism spectrum in center-based programs. I have a wife and two adult children ages 22 and 19.

Jen Berner, TBAISD Teacher Consultant

My elementary years were spent at the Haleakala Waldorf School in Maui, HI. I graduated from The Pathfinder School (an independent school) in Traverse City, MI in 1984. In 1989 I obtained a Bachelor's degree in English and Economics from Western Michigan University. My 1992 Master's degree in Education/Teacher Certification in English and Economics is from Nazareth College. In 1998 I completed Special Education certification in emotional impairment and learning disabilities from Grand Valley State University. While in grad school at Nazareth College, I worked as an aide, taught French and Great Books and ran the after school program at The Montessori School in Kalamazoo, MI. I spent four years teaching special education, English and Social Studies at Northport Public Schools. I have worked as a teacher consultant for TBAISD for the past 20 years. My work entails facilitating interventions in K-12 general and special education, using data based decision making, providing analysis and interpretation of information in oral and written reports, assisting with progress monitoring for select students, assisting with Individualized Educational Plan Team (IEPT) meetings, assisting in ongoing review of strategies, evaluating (administering and interpreting standardized assessment measures) for disabilities with a multi-disciplinary team in five regional schools-two private schools and three public schools, implementing the Check & Connect intervention at the high school level, and participating in child study teams in all five schools. I live in Traverse City, MI with my husband. We have a daughter who is 16 and a son who is 20. Both of our kids attended Montessori in elementary.



Lillie Wolff

Lillie Wolff is an antiracism coach, facilitator, and somatic practitioner working at the intersection of healing and racial justice. Her understanding of systemic oppression and equity is rooted in her work with the national organization Crossroads Antiracism. She was a Core Organizer/Trainer with Crossroads and served as Co-Executive Director for Crossroads' regional partner organization ERACCE (Eliminating Racism and Creating/Celebrating Equity) based in Kalamazoo from 2014-2018. Wolff is also a trained Racial Healing Practitioner for Kalamazoo's Truth, Racial Healing, and Transformation initiative of the Kellogg Foundation. She is currently a professional Somatic Experiencing Practitioner-in-training at Dr. Peter Levine's Somatic Experiencing Trauma Institute and is one of a growing number of practitioners across the country applying the frameworks of this modality to cultural healing around the trauma of oppression.

Gigi Chinisci

Gigi Chinisci worked in admission for over 11 years before retiring as the Assistant Director of Admission for Albuquerque Academy. Previous to being an admission officer, she had a 27-year career as a dental hygienist in California and New Mexico.

Her deep interest in human behavior led Gigi to return to school as a psychology major, while still working full-time in admission. Her focus is in cognitive psychology with an emphasis on positive psychology. She has been a national speaker and workshop presenter since 2012. Gigi is married and has three grown children. The hobbies that keep her occupied are golf, gardening, cooking and reading.





**AMI
USA**

**ASSOCIATION
MONTESSORI
INTERNATIONAL**

Registration Information



To register visit:

<http://bit.ly/AMIUSAADMINRETREAT20>

Early Bird: May 11, 2020

Member \$620

Non-member \$735

Regular Rate: June 8, 2020

Member \$665

Non-member \$780

On Site:

Member \$785

Non-member \$890

Policies

Cancellation/Refund Policies

Requests made in writing (email is acceptable) and received by May 11, 2020 will be refunded 50% of the registration fee paid. Requests made in writing (email is acceptable) and received by June 8, 2020 will be refunded 25% of the registration fee paid. There will be no refunds issued for requests made after June 8, 2020. After June 8, 2020 all payments are non-refundable for any reason, including but not limited to illness, force majeure, or travel-related problems. Memberships are non-refundable and non-transferable.

Speaker Policy

Speakers are confirmed for all workshops, however AMI/USA reserves the right to replace speakers who are unable to attend or to cancel presentations if necessary.

Registration Transfer Policy

Registration may be transferred from one staff member to another within the same school by contacting the AMI/USA office prior to May 11, 2020.

Memberships

AMI memberships must be current through July 15, 2020.

**If your membership needs to be renewed in order to receive the discount, and you do not indicate this on your registration form, your card will be automatically charged for the renewal the week of June 8, 2020.

On-Site Registration

Fees for on-site registration will be accepted by credit card or check only.

Special Accommodation Request

Requests regarding ADA needs must be made one month in advance. Please contact Samantha Levine, samantha@amiusa.org, with details of your needs.

Photo Use

Your photo may be taken during the 2020 Administrators Retreat and may be posted online or in printed material. Attendance at the Administrators Retreat is consent for photo release.

Video recording of sessions is NOT permitted.

To reserve a room, call 231-946-5000 and ask for the Association Montessori International Group Block. The cut-off date will be 6/19/2020.

<https://www.park-place-hotel.com/>